



**ISLE OF  
WIGHT  
COUNTY, VA**  
Local Roots,  
Global Reach

# Newcomer's Guide 2025

## Welcome to the Isle!

As a new resident, you may have some questions about the County and the many services available to you. The following information is designed to help ease your transition into your new home and life here in Isle of Wight. If you would like additional information about visiting or relocating to Isle of Wight, please stop by our Visitor Center at 319 Main Street or give us a call at 757-357-5182 or toll-free at 800-365-9339.

## COUNTY COMPLEX

17130 Monument Circle, Windsor, VA 23487



## STAY INFORMED

**Isle of Wight (IOW) County Website:** [isleofwight.gov](http://isleofwight.gov)

**Facebook Page:** Isle of Wight County Virginia

**IOW County Parks & Recreation:** 757-357-2291

**Smithfield & IOW Tourism:** 757-357-5182, 800-365-9339, [GenuineSmithfieldVA.com](http://GenuineSmithfieldVA.com)

### Newspapers:

Daily Press (Newport News), 757-247-4800, [DailyPress.com](http://DailyPress.com)  
Suffolk News-Herald, 757-539-3437, [SuffolkNewsHerald.com](http://SuffolkNewsHerald.com)  
Virginian-Pilot (Norfolk), 757-446-9000, [PilotOnline.com](http://PilotOnline.com)  
Smithfield Times, 757-357-3288, [SmithfieldTimes.com](http://SmithfieldTimes.com)  
Tidewater News (Franklin), 757-562-3187, [TheTidewaterNews.com](http://TheTidewaterNews.com)  
Windsor Weekly, 757-562-3187, [WindsorWeekly.com](http://WindsorWeekly.com)

## EDUCATION

**Isle of Wight County Schools:** 820 West Main St., Smithfield, VA 23430, 757-357-4393, [iwcs.k12.va.us](http://iwcs.k12.va.us)

**Isle of Wight Academy (private):** 17111 Courthouse Hwy., Isle of Wight, VA 23397, 757-357-3866, [iwacademy.com](http://iwacademy.com)

**Great Oaks Learning Center:** 120 Underwood Lane, Smithfield, VA 23430, 757-377-6695, [greatoakslearning.com](http://greatoakslearning.com)



## TAXES & LICENSES

**Commissioner of the Revenue:** 757-365-6222

**Treasurer:** 757-365-6228

**Real Estate Tax:** The real estate tax in Isle of Wight County is assessed by the Commissioner of the Revenue and collected by the Treasurer. The current real estate rate is \$0.73 per \$100 of the assessed value. Tax Relief is available for the elderly and disabled, disabled veterans, and surviving spouses of veterans who qualify. Payments should be made to the Treasurer's Office in two installments, due June 5 and December 5.

**Personal Property Tax:** The personal property tax is assessed by the Commissioner of the Revenue and collected by the Treasurer. It includes vehicles, motorcycles, motor homes, boats and trailers. The current personal property rate is \$4.50 per \$100 of the assessed value. Payments should be made to the Treasurer's Office in two installments due June 5th and December 5th.

**Business Licenses:** When starting a business in Isle of Wight, please contact the Commissioner of the Revenue so that your business may be correctly classified. A majority of the license taxes are based on gross receipts. Starting January 1, 2025, all businesses with gross receipts over \$25,000 must purchase a business license before conducting business in Isle of Wight County.

**Pet License:** If your pet is more than four months old, it must be vaccinated against rabies and be licensed with the County. This is required by Virginia Law and the Isle of Wight County Code. Pet licenses are available through the Treasurer's Office and must be renewed annually by February 1st.

## COURTS

**Circuit Court:** 757-365-6233

**General District Court:** 757-365-6243

**Juvenile & Domestic Relations Court:** 757-365-6237

[isleofwight.gov](http://isleofwight.gov) 757-357-3191



# Newcomer's Guide 2025

## SUPPORT SERVICES



**Animal Services:** 757-365-6318

**Social Services:** 757-365-0880

**Health Department:** 757-357-4177

**Voter Registration:** 757-365-6230

**Parks & Recreation:** 757-357-2291

**Libraries:** Blackwater Regional Library System,  
BlackwaterLib.org  
Smithfield: 255 James St., 757-357-2264  
Carrollton: 14362 New Towne Haven Ln., 757-238-2641  
Windsor: 18 Duke St., 757-242-3046



## UTILITIES

### Cable and Satellite Television

- DirectTV, 888-988-0345, Directv.com
- Charter Spectrum 855-863-5818, Spectrum.com
- Dish Network, 855-340-8780, Dish.com

### Internet Providers (Wired & Wireless)

- Charter Spectrum 877-923-5173, Spectrum.com
- Verizon DSL/FIOS/Wireless, 833-VERIZON, Verizon.com
- HughesNet, 844-356-3962, HughesNet.com
- AT&T, 833-397-0843, ATT.com
- T-Mobile, 855-592-1293, T-Mobile.com

### Landline Home Telephone

- Verizon, 833-VERIZON, Verizon.com

### Electricity

- Community Electric Cooperative, 757-242-6181, ComElec.coop
- Dominion Energy, 866-366-4357, DominionEnergy.com

### Natural Gas

Columbia Gas of Virginia, 800-543-8911,  
ColumbiaGasVA.com

### Solid Waste Disposal

Public Works/Solid Waste Division, Isle of Wight, 757-365-1652

### Recycling

Single-Stream Recycling Program, 757-365-6298

### Trash - Curbside Collection

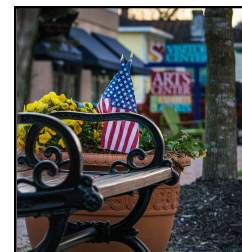
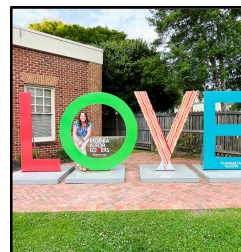
GFL Environmental, 757-487-2220, gflenv.com

### Wastewater Treatment

Hampton Roads Sanitation District (HRSD), 757-460-2261, hrsd.com

### Water/Sewer

- Utility Services Department, Isle of Wight County, 757-365-6284
- Town of Smithfield Water Department, 757-365-4254
- Town of Windsor Water Department, 757-242-4288



## WHO DO I CALL IF ....

**I need to change my voter registration and/or find my local polling precinct?:**

Voter Registrar, 757-365-6230

**I need a special garbage pickup:** GFL Environmental, 757-487-2220, gflenv.com

**My neighbor's dog just won't stop barking or I have found or lost a pet:** Animal Services, 757-365-6318

**I want to report a pothole or debris:** Virginia Department of Transportation (VDOT), 800-FOR-ROAD. To report about roads in Smithfield, Public Works Department, 757-365-4200

**I want to report clogged storm drains:** For public roadways, Virginia Department of Transportation (VDOT), 800-FOR-ROAD. Private property/roads are the owner's responsibility.

**I need to contact the sheriff for a non-emergency:** Sheriff's Office, 757-357-2151

**I need to contact Fire Rescue for a non-emergency:** Fire Rescue, 757-365-6308

**I need information about building permits and/or inspections:** Building Inspections, 757-365-6215



[isleofwight.gov](http://isleofwight.gov) 757-357-3191





# Newcomer's Guide 2025

## ELECTED OFFICIALS AND CONSTITUTIONAL OFFICERS

### Board of Supervisors ([isleofwight.gov](http://isleofwight.gov))

- Don G. Rosie II, District 5 (Chair)
- Rudolph Jefferson, District 3 (Vice Chair)
- Joel C. Acree, District 4
- Renee K. Rountree, District 1
- Thomas J. Distefano, District 2

### Clerk of the Circuit Court

Laura E. Smith

### Commissioner of the Revenue

Gerald H. Gwaltney

### Commonwealth's Attorney

Georgette C. Phillips

### Sheriff

James R. Clarke

### Treasurer

Julie D. Slye

### School Board Members ([iwcs.k12.va.us](http://iwcs.k12.va.us))

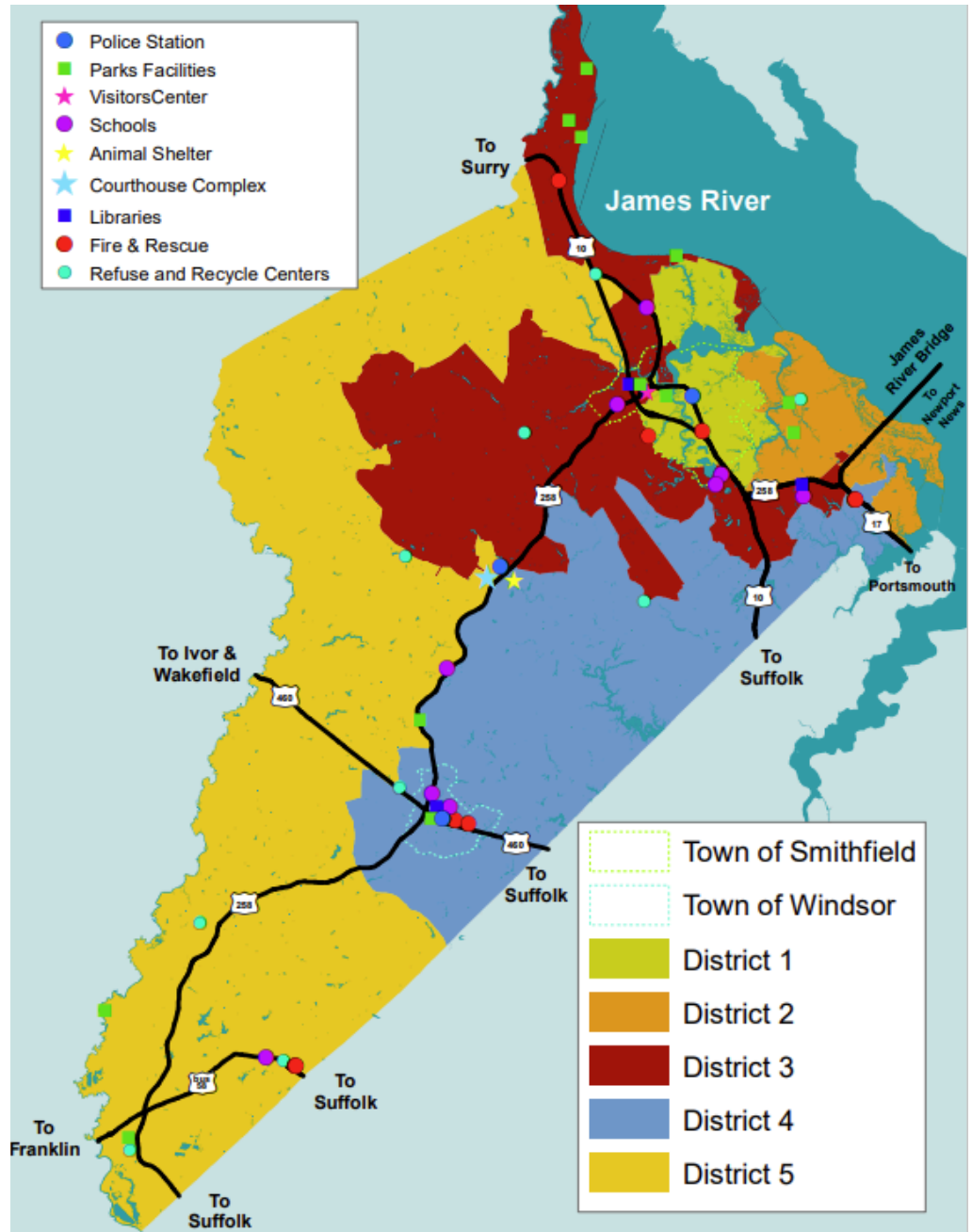
- Jason P. Maresh, District 4 (Chair)
- Mark Wooster, District 2 (Vice Chair)
- John Collick, District 5
- Michael Cunningham, District 3
- Brandi Perkins, District 1

### Smithfield Town Council

- Michael G. Smith (Mayor)
- Bill Harris (Vice Mayor)
- Mary Ellen Bebermeyer
- Steven G. Bowman
- Jeff Brooks
- Valerie Butler
- Darren Cutler

### Windsor Town Council ([windsor-va.gov](http://windsor-va.gov))

- George Stubbs (Mayor)
- J. Randy Carr (Vice Mayor)
- David Adams
- Walter Bernacki
- Edward "Gibbie" Dowdy
- Jake Redd
- Marlin W. Sharp



## EMERGENCIES



### FIRE RESCUE & LAW ENFORCEMENT EMERGENCY RESPONSE: 911

### SIGN UP FOR IW ALERT:

Alerts on severe and unexpected incidents and weather, 757-365-6308, [IWAAlert.net](http://IWAAlert.net)

**FIRE RESCUE:** 757-365-6308

**ANIMAL SERVICES:** 757-365-6318

**UTILITY SERVICES:** 757-365-6284



[isleofwight.gov](http://isleofwight.gov) 757-357-3191